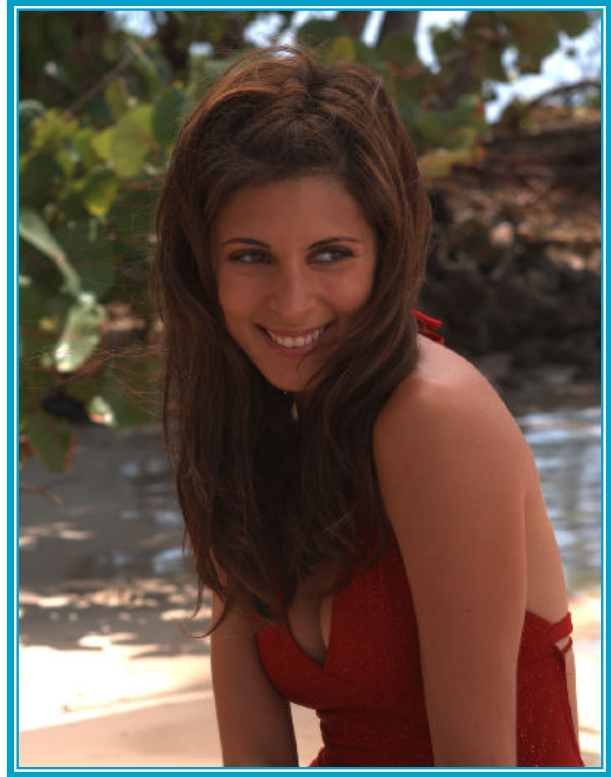


JAMIE-LYNN SIGLER (“Alexis Manetti”)

Best known for playing ‘Meadow Soprano’ on HBO’s critically acclaimed drama “The Sopranos,” Jamie-Lynn Sigler has taken on a wide variety of roles demonstrating real range, not only as an actress but also as a talented musician.

In 2004 Jamie-Lynn starred as notorious “Hollywood Madam” Heidi Fleiss in the USA TV film *Call Me: The Rise and Fall of Heidi Fleiss*. She recently filmed a starring role in *Dark Ride*, a horror movie for Lions Gate Entertainment and has a number of movies due for release in 2007.



Jamie-Lynn has just finished filming the final episodes of the Emmy Award-winning TV drama *The Sopranos* which will air in the US in April. She returns as ‘Meadow Soprano,’ the daughter of a mob boss trying to balance her school life, social life, and her parent’s divorce. Jamie-Lynn’s performance on the show earned her the 1999 and 2000 Hollywood Reporter Young Star Award for Best Actress in a Dramatic Series, as well as two ALMA Award nominations for Best Actress in a Drama Series (2001 & 2002.)

Jamie-Lynn’s musical talents were ably demonstrated on stage when she made her Broadway debut as ‘Belle’ in Disney’s *Beauty and the Beast* in October 2002. Additional theatre roles include New York regional productions of *Annie*, *The Wizard of Oz*, *The Sound of Music*, *The Wiz* and *Gypsy*.

A survivor of Anorexia, Jamie-Lynn’s story of her battle with an eating disorder, *Wise Girl*, was published in 2002 to rave reviews. Currently a spokesperson for the National Eating Disorders Association, Jamie-Lynn regularly speaks across the country educating people about the dangers of eating disorders.

A native of New York, Sigler divides her time between New York and Los Angeles.